

Annual Report 2014-15



Our Vision

A Healthier Northern Community

Our Mission

To assist Northern Health and related services to achieve their goals by:

1. initiating and coordinating fundraising activities
2. mobilising our community leaders to foster a philanthropic culture within our diverse community.

Our Values

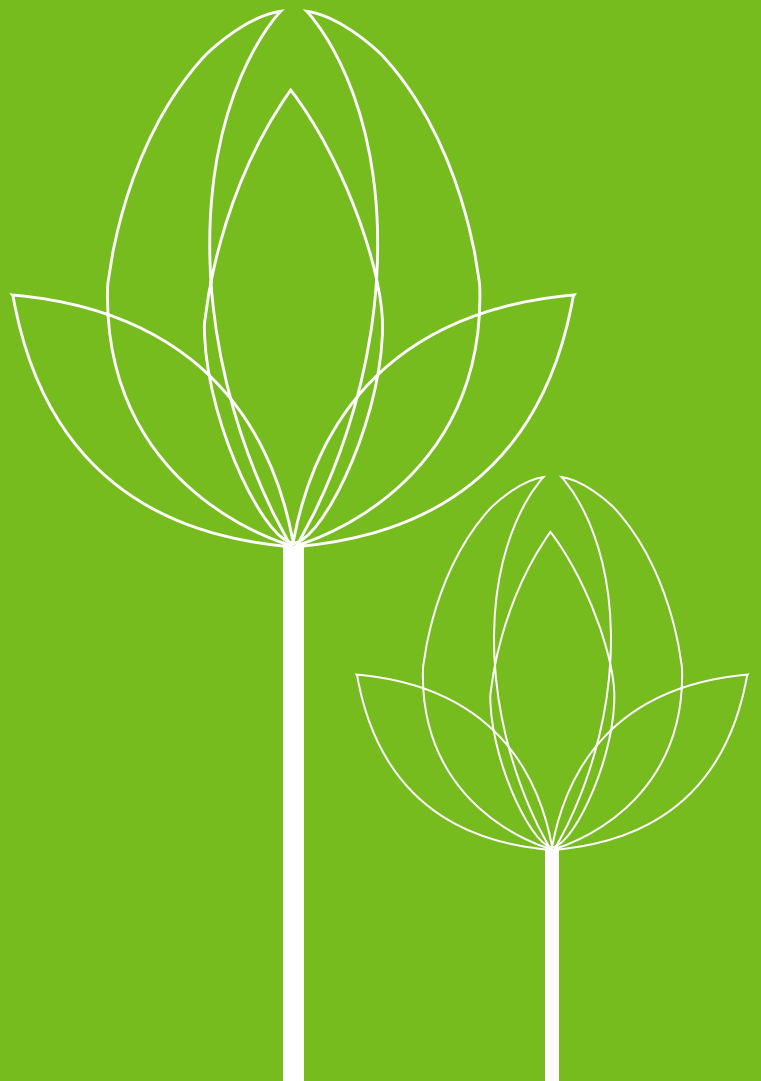
We are committed to our community.

We act with integrity by being open and honest.

We develop innovative approaches to fundraising.

We are proactive in building a culture of giving.

We show leadership in all our actions and research



CONTENTS

Report of Operations

- 03 Chair's Report
- 04 Northern Health Foundation Board
- 06 Future State
- 07 Our Approach
- 09 The Way Forward
- 11 Part 1: What we have funded
- 13 Part 2: Our community
- 16 Part 3: Signature events
- 18 Part 4: Donor spotlight
- 20 Part 4: Donor list



Chair Message

The driving force behind the Northern Health Foundation Board is to connect and engage with our community. We are always looking to deepen our relationships in order to raise funds to improve the health of the people in Melbourne's north.

The Foundation Board works closely with Northern Health to contribute to a shared vision of Outstanding Health Care for our Community.

We have had incredible success over the last twelve months. We have demonstrated our values, showing passion, dedication, progression and collaboration while building supportive relationships with corporate partners, extending our professional networks and connecting with many Trusts and Foundations to invest in the health of people of the north.

In the last five years we have raised over \$7 million, which achieved;

1. \$3 million towards the Northern Centre for Health Education and Research
2. \$1 million towards research projects and scholarships
3. \$1.5 million towards medical equipment and resources across Northern Health's campuses.

Throughout this year's Annual Report we have outlined our goal over the next three years of building on our success by activating new and innovative ways to raise much-needed funds. By doing this we will double our income to support more activities that improve the health of our community.



John Molnar
Foundation Chair

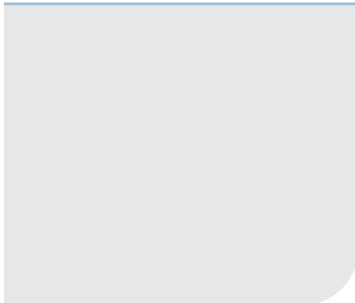


Northern Health Foundation Board



John Molnar

John Molnar has practiced law for 30 years, and during that time, became heavily involved in the field of law relating to health service providers and hospitals. He has served on the boards of a number of public and private hospitals, including Northern Health and the Nurses Board of Victoria. Recognising the need for additional funding so that Northern Health can meet its commitment to the rapidly growing northern community and establish itself as a major teaching and research centre, Mr Molnar was instrumental in the establishment of the Northern Health Foundation and remains a passionate advocate of the Northern Health network and the dedicated medical professionals who work within it.



Geoff Brereton



Pina Di Donato

Pina Di Donato is the Marketing Director of Turi Foods Pty Ltd. Turi Foods is a family owned company producing products which are marketed under such brands as La Ionica, Golden Farms, Bannockburn Free Range and Montefiore Cheese. Pina joined the family business after having completed a Degree in Economics and Commerce at the University of Melbourne in 1993. Pina is also the founder and Chairperson of the Turi Trust, the philanthropic arm of Turi Foods. As a local resident and mother of three, Pina accepted a position on the Northern Health Foundation Board, where she is currently serving in her second year, as a way of giving back to the local community.



Ian Dunn

Ian Dunn was a partner in a Melbourne law firm for nearly 30 years. Elected President of the Law Institute in 1987, he was appointed CEO of the Institute from 1996-2002. He subsequently served as the inaugural Chair of the Victorian Commission for Gambling Regulation 2004-2009, and is Adjunct Professor in Law at La Trobe University. He is a mediator, and presently is an Ombudsman (General Insurance) at the Financial Ombudsman Service.



David Turnbull

David Turnbull is CEO of the City of Whittlesea, one of the fastest growing councils in Australia. Throughout his career, Mr Turnbull has amassed over 30 years of local government experience. Most of this time has been spent in managing growth areas where his true passion for strategic planning has been put to best use. His high standards and strong political acumen have earned him the respect of all levels of government, councillors, and the development industry. In recognition of his significant contribution to leadership in relation to the Victorian bushfires, Mr Turnbull received a Special Commendation in the Executive Section SACS Leadership in Government, 2009 Awards.

Northern Health Foundation Board cont'd



Trevor Gorman

Trevor Gorman is Managing Director of the McMullin Group and Chairman of its funds management arm, MPG Funds Management. Together with Ian McMullin and David Ross, he founded McMullin Group in late 1999. Previously he was managing partner of the Victorian Growth Solutions Division of Deloitte Touché Tohmatsu. A chartered accountant, he is a Fellow of the Institute of Accountants and holds a post graduate diploma in business administration from Swinburne University.



Peter McWilliam

Mr Peter McWilliam brings with him extensive skills in business and management derived from 37 years of experience working at RBM and Paramount Plastic Extrusions, one of Australia's largest privately owned plastic manufacturing companies. He served as General Manager and Company Director within in the organisation and its subsidiary Paramount Plastics (Aust.) for 30 years, providing leadership based on inspiring effective teamwork, strong planning and organisational skills. Mr McWilliam understands the importance and value of staff in an organisation's success and has many years of experience in implementing training and mentoring programs to maintain organisational viability. He sat on the Australian Standards subcommittee on Building Facades and Glazings in the late 1980s and initiated and implemented Australian and International Standards ISO9001 and 9002 at Paramount Plastics (Aust.) from the mid-1990s, successfully being audited and retaining accreditation for Paramount Plastics (Aust.) from then until his retirement.

As a resident of the northern suburbs, Mr McWilliam is familiar with its rapid growth and development and the community's evolving needs. Since retiring in 2010, he is now focused on sharing his business acumen and skills to benefit health services in Melbourne's north.



Professor Vin Massaro

Professor Vin Massaro has considerable experience in senior management in higher education and health institutions, and as a consultant and adviser in Australia and internationally. He has also chaired or been a member of several Boards.

Professor Massaro is currently Managing Director of Massaro Consulting, a company providing strategic advice on higher education policy, management and governance, and on health workforce planning and training to organisations and government departments.

He has been Chief Executive of the Royal Australasian College of Surgeons and was the inaugural Chief Executive of the Victorian State Board of Education. He has held senior positions at Flinders University and the Lincoln Institute of Health Sciences (now the Faculty of Health Sciences at La Trobe University). He has also been a consultant on higher education to the OECD and has been editor of its international *Journal of Higher Education Management and Policy*.

Professor Massaro is the independent member of the Board of the Royal Australian and New Zealand College of Radiologists and a member of the Advisory Board of the Centre for International Mental Health at the University of Melbourne. His previous Board roles have included the Anti-Cancer Foundation of South Australia, the Australian Safety and Efficacy

Register of New Interventional Procedures – Surgical (ASERNIP-S), Flinders Reproductive Medicine and Flinders Consulting.

He is a Professorial Fellow at the University of Melbourne, with honorary positions in the Faculty of Medicine, Dentistry and Health Sciences, in the LH Martin Institute for Higher Education Leadership and Management, and in the Centre for the Study of Higher Education.

Future State:

The future state of the Northern Health Foundation looks very different. The Foundation needs to implement new fundraising initiatives that compliment the existing however engage a new audience. The future will include;

1. Implement new systems and processes to ensure infrastructure can meet growth.
2. Greater focus on marketing to Northern Health's patients, which includes; direct mail, telemarketing, regular giving, bequests and volunteer engagement.
3. Greater monitoring and reporting of fundraising programs to ensure sector trends are being met.
4. Better donor communications of Northern Health's needs and the journey to create *outstanding healthcare for our community*.
5. Greater Volunteer engagement to identify community ambassadors
6. Expansion of Bequest and Major Gift prospecting through the implementation of Direct Marketing,

Our Vision

To be Victoria's leading health care Foundation to support Northern Health's vision of *Outstanding Health Care for our Community*.

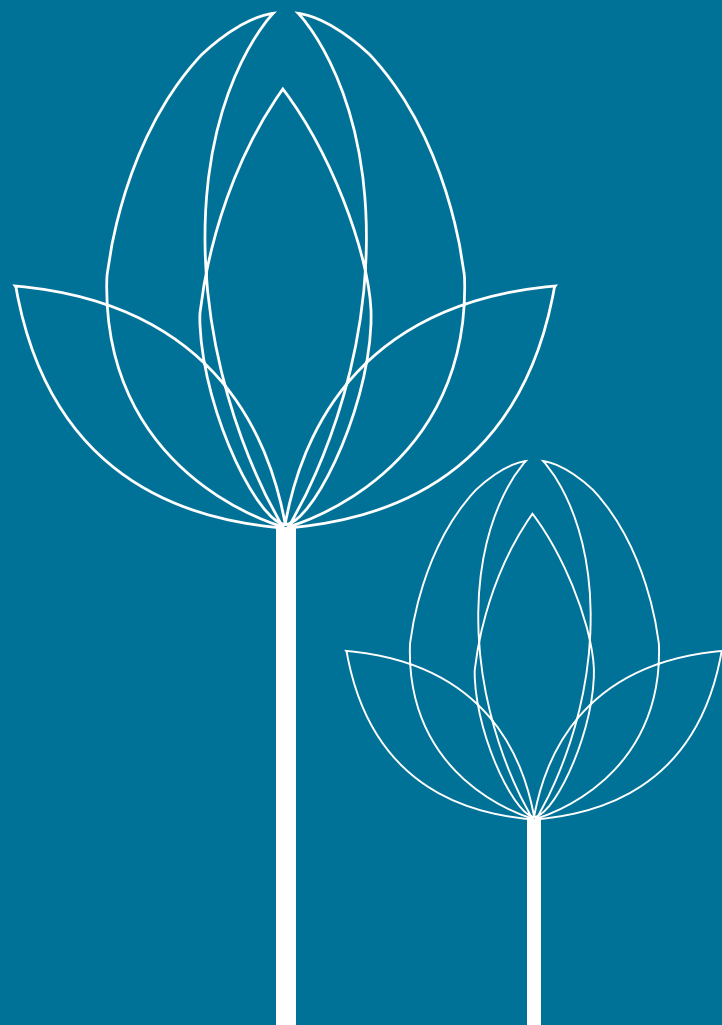
Our Mission

We work collaboratively with Northern Health to engage our clinicians, volunteers, staff and community to develop a culture of philanthropy through innovative engagement.

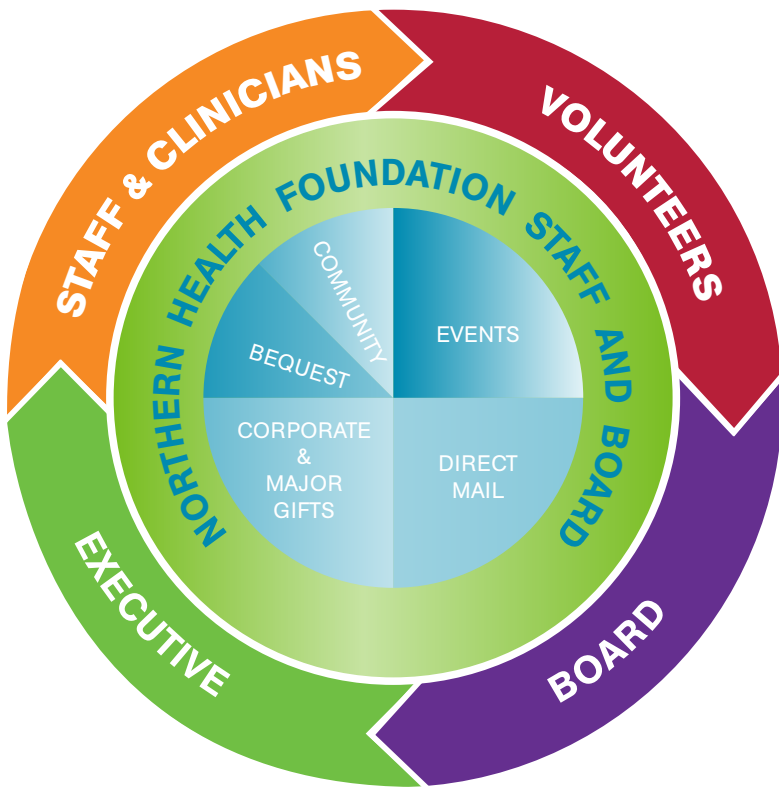
Our Values

At all times we aspire to be;

- Passionate – we care
- Dedicated – we are focused
- Progressive – we look to improve
- Collaborative – we are a team



Our Approach

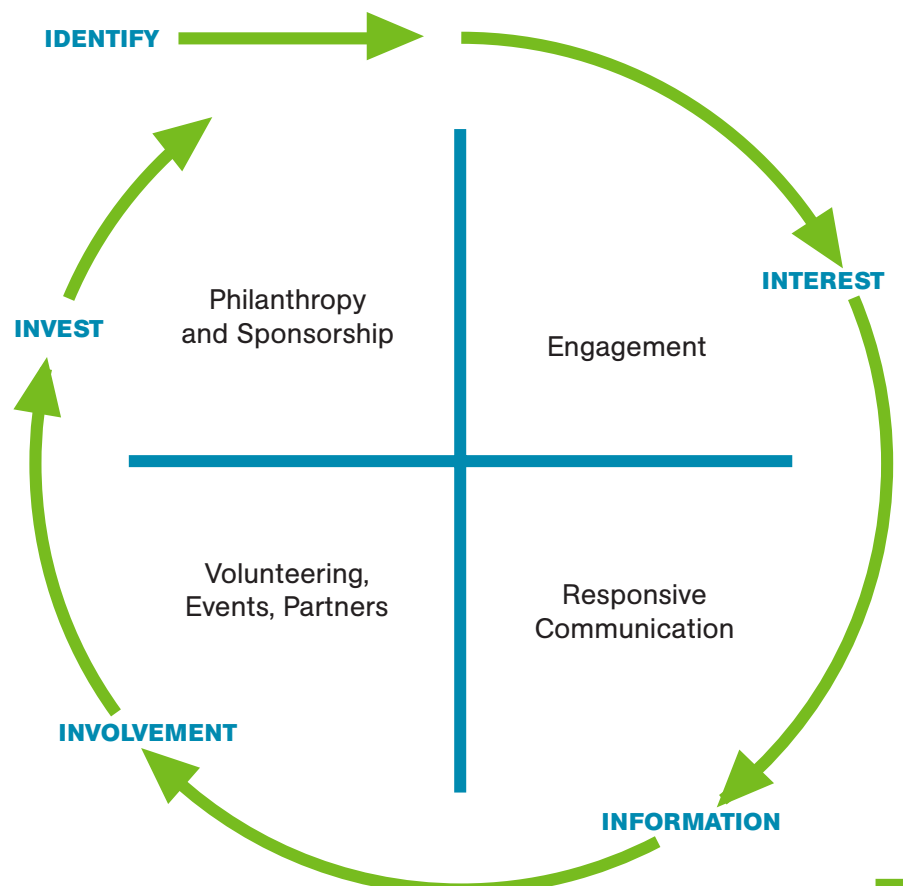


“our approach at the Northern Health Foundation is to engage and work collaboratively with our clinicians, volunteers, staff and community to develop a culture of Philanthropy within the northern community”

Janet Compton,
Chief Executive Officer,
Northern Health

“Through innovative fundraising methods our goal is to engage with patients, the community and partners to provide outstanding health care that’s better for everyone”

John Molnar,
Board Chair,
Northern Health Foundation





The Way Forward:

OUR VISION: Outstanding Health Care for our Community

OUR MISSION: We work collaboratively with Northern Health to engage our clinicians, volunteers, staff and community to develop a culture of philanthropy through innovative engagement

Strategic Goals	To work with Northern Health and our community to identify the best project to fund in order to achieve our vision		To use the most effective and innovate approaches to philanthropy			
OBJECTIVE	Partnership with community – Through partnering with the local community and community organisations, the Northern Health Foundation will be a leader in the development of philanthropy in the northern community	Clinicians – We will develop relationships with our clinicians and identify advocates for greater patient, clinician and Foundation engagement.	Identify – We will identify community members who wish to contribute back to their health service. This will be done through the engagement of our patients, corporate partners, staff and volunteers.	Communicate – We will communicate through innovative ways to keep our community informed.	Engage – We will create engagement opportunities to build long lasting relationships with our community.	Invest – Through effective communication and engagement opportunities, philanthropist and partners will be given the opportunity to invest in outstanding health care for the northern community.
FOUNDATION	Review volunteering at Northern Health and identify engagement opportunities for the greater community. Identify like minded community organisations to partner with to increase community engagement Develop fundraising programs in growth areas (Eg. Kilmore, Hume)	Clinicians are engaged and understand how the Foundation/ Fundraising can support their programs.	Review Northern Health's Privacy policy Database upgrade Patients identified at admission	Appropriate communication methods Regular newsletter communication	Volunteer forums Stakeholder events maintained Regular corporate engagement opportunities.	Policy and procedures updated to manage growth
YEAR 2 OUTCOMES	Develop volunteer programs to support the patient engagement at the bedside (grateful patient program). Strategic partnerships developed in growth areas for Northern Health	Clinicians actively supporting patient engagement. Clinicians engaging health care partners to support the Foundation	Patients engaged at bedside Patient's capacity to donate know	Implement online and SMS communication methods Social media implemented	Corporate volunteering program Donor tours with Executive team Major donors highlighted	Direct Marketing to patients Capital campaign Major donors approached
YEAR 3 OUTCOMES	All patients engaged at the bedside Donors acknowledged at the bedside on admission by volunteers Ongoing strategic, and sustainable fundraising programs developed	Embedded culture of supporting philanthropic activities	Patient ambassadors Clinicians referring patients Donors who are patient, engaged at bedside	Stakeholders regularly communicate; SMS, online, mail, telephone.	Batten Society launched Holistic approach to Corporate partnership	Regular giving campaign Bequests
MEASURES	<ol style="list-style-type: none"> Northern Health's volunteer program grows by 20 per cent over three years. Volunteers attend monthly Northern Health orientation sessions Volunteers are communicated regularly and invited to attend a quarterly briefing sessions 	<ol style="list-style-type: none"> Clinicians nominate and refer 'grateful' patients to the Foundation Clinicians identifying new fundraising avenues via research grants and corporate partners. 	<ol style="list-style-type: none"> Database fully operational with donors and patients being identified daily. New technology implemented for clinicians and volunteers to engage patients at the bedside. 	<ol style="list-style-type: none"> Monthly Direct Marketing to patients. Five per cent of patients responding to Direct Marketing with an average donation of \$40.00 	<ol style="list-style-type: none"> Over \$1m raised from Major Gifts per annum. Capital Campaign launched 	<ol style="list-style-type: none"> Regular communication targeting Bequest prospects. Over \$2m in Bequest commitments Over 20 Bequest prospects identified 50 per cent growth per annum in Bequest prospects.



PART I

What we have funded

The Northern Health Foundation exists to support the life changing, and often life-saving, work of Northern Health. By efficiently managing the process for donations and philanthropic support, the Foundation provides much needed funds in the areas of teaching, training and research; education; capital works; and the purchase of medical equipment within Northern Health.

In 2014-15, the total value of the Foundation's support totalled \$3 million, with the largest portion of funding going towards the state-of-the-art Northern Centre for Health Education and Research, which will bring benefits to our community and consumers of Northern Health's services now and well into the future.

Supporting the next generation of health professionals

The Foundation contributed \$3 million to the Northern Centre for Health Education and Research

The Northern Centre for Health Education and Research at The Northern Hospital, Epping, is a world class medical and training facility that will provide up to 900 undergraduate, graduate and postgraduate student placements in the areas of medicine, nursing and a range of allied health disciplines.

The Centre has been seven years in the making and is the result of a partnership between Northern Health, the University of Melbourne, La Trobe University and the State and Commonwealth governments.

In recognition of the importance of research and training as key focus areas at Northern Health as it evolves to become a major university teaching health service, the Foundation provided \$3 million towards the Centre's construction.

The Foundation's support played a significant role in enabling the \$34.4 million facility to open its doors in February to coincide with the start of the 2015 academic year.

The Centre is dedicated to providing the highest quality education and research opportunities for both Northern Health and our university partners, and the multi-storey Centre is home to the latest simulation technology that reflects real life medical settings, research laboratories, modern lecture theatres and community spaces.

Among the first cohort of students to arrive at the Centre were speech pathology, occupational therapy and social work students.

The Northern Centre for Health Education will produce collaborative research that is focussed on tangible outcomes for medical conditions directly affecting the northern community. The results of this research, together with the Centre's capacity to positively grow and influence Northern Health's ability to attract and develop a high performing workforce, will deliver lasting benefits to our community.

Securing the latest equipment to benefit our patients

More than \$189,000 worth of leading edge technology and equipment was provided by the Foundation this year. Access to the latest equipment is essential in order for the medical professionals at Northern Health to provide our patients with the highest quality of care. Not only does the Foundation's support help the Northern Health team save lives and improve health today, it also helps build our capacity to provide quality health care for our growing community tomorrow and in the years to come.

Some of the largest purchases facilitated by the Northern Health Foundation's support this year include \$136,000 for an EPIQ 5W Ultrasound System for use by The Northern Hospital's Outpatient services and \$18,900 for a LUCAS 2 Chest Compression System to be used by the Emergency Department and Cardiology Department.

Additional equipment obtained with the help of the Northern Health Foundation included patient monitoring devices, recliners and blanket warmers.

The complete list of equipment purchases made possible with the support of the Foundation in 2014-15 is provided below.

- \$136,000: EPIQ 5W Ultrasound System for The Northern Hospital Outpatient Clinic
- \$5,890: Reclining treatment chair for the Oncology Unit
- \$3,845: Blanket warmer for the Oncology Unit
- \$3,820: 4 x waiting room chairs for the Oncology Unit
- \$7,200: 4 x DPU recliners for use in the Special Care Nursery
- \$9,800: 4 x Princess chairs for Inpatient Wards A, B, M and D
- \$1811: Patient Monitor Vital Signs Device for Unit A
- \$1811: Patient Monitor Vital Signs Device for Unit M
- \$18,900: LUCAS 2 Chest Compression System for the Emergency Department and Cardiology Department



PART 2

Our community

Northern Health strives to play an active and engaged role in our local community. Our dedicated team of supporters and volunteers provide invaluable support to the day-to-day work of Northern Health through the generous donation of their time, skills or fundraising efforts.

In 2014-15 we were again humbled and extremely grateful for the efforts of our volunteers, local community groups and individual fundraisers.

We thank each of them for their incredible generosity and commitment to helping our community and honour their contributions by sharing their stories below.

Lending our support to locals making a difference: Rotary Club of Epping

The Rotary Club of Epping was chartered in June and Northern Health is proud to host the group which meets at 7:30 am every second Friday at the Northern Centre for Health Education and Research at Epping.

Rotary is a service organisation widely respected for its leadership and commitment to 'service above self' in both local and international communities; with over 1100 Rotary Clubs around Australia.

Rotary members include neighbours, friends and community leaders who come together to create positive change in the local community.

The members of Rotary Epping include Northern Health employees, local politicians, business owners and community members.

Any local northern residents passionate about making a difference to our community are welcome to join the Club as it works to develop and support a wide range of community initiatives.

Raising the stakes: Bev Carmen's record Oaks Day fundraiser

Bev Carmen has been a tireless, long-time supporter of Northern Health, having raised thousands of dollars over many years to support our health services.

During the 2014 Melbourne Spring Racing Carnival, Bev again hosted her annual Oaks Day fundraising event at Kilmore Trackside, raising a record \$5,500 for cancer services at Northern Health. These funds will be used to help purchase two chemotherapy infusion pumps.

More than 150 guests, including representatives from Northern Health, attended the event which featured a range of fun activities. Foremost amongst them was the 'Fashion of the Fields' competition with the top prize in the men's category being awarded to Northern Health's own Director of Surgery, Anton Freischmidt!

Through her ongoing support and engagement with Northern Health, Bev and her team of champions continue to make a real difference to our community.

Special delivery: Epping Fundraising Group helps northern newborns

New mums and dads using the services of Northern Health's Special Care Nursery have benefited from a generous gift of comfort and care made by Epping Fundraising Group.

The Group's \$8,000 gift was used to purchase four recliner chairs that will help hundreds of mums and dads each year to enhance the parent and baby bonding experience while promoting ongoing developmental newborn care.

The Special Care Nursery is one of the busiest services at The Northern Hospital, with around 600 neonatal admissions each year. Using a family-centred model of care, the team at the Special Care Nursery works with families to overcome the health issues of their baby, reunite the babies with their parents and help ensure a smooth transition from hospital to home.

The Special Care Nursery is just one of Northern Health's services to have received generous support from Epping Fundraising Group. The Group, which was formed three years ago to support the community by raising funds for Northern Health, has already raised more than \$20,000.

Previous donations from Epping Fundraising Group have helped Northern Health purchase cots, electric lift recliners and chairs for our senior patients.

The Group's four local members hold regular stalls at The Northern Hospital, selling homemade cakes and knitted baby clothing, as well as organising raffles and sausage sizzles throughout the year. Hundreds of local community members who use Northern Health's services continue to benefit from the comfort and care provided by the selfless efforts of this incredible group.

Northern Health volunteers: Generously giving their time to help others

There are many ways to support Northern Health. Some supporters choose to make a monetary donation, others leave a bequest, while more than 400 local residents offer the precious gift of time by volunteering across the organisation.

Northern Health volunteers play an important role in helping patients and visitors feel welcome, and in providing an added sense of comfort during what can be a potentially difficult time. Volunteering across a wide range of roles, our dedicated volunteers give approximately 160 hours in support each day.

The motivation for volunteering is different for each person, but most commonly, our volunteers tell us they

want to lend a hand and give back to their community. From meeting patients and listening to their stories, to talking with people and helping others, our volunteers find their experience at Northern Health richly rewarding.

Volunteers from Broadmeadows Health Service (BHS) recently shared their thoughts:

I love interacting with patients and learning about people from different cultures - Julie

I have a lot of fun and a good laugh when they play bingo with the patients - Lyn

Everyone is nice at BHS and I particularly love the Palliative Care Unit - Kerrie

I love working in the day centre and spending time listening to their stories and having a laugh - Jo

I find it to be an uplifting experience. I never find there is sadness in spite of people having poor health - Eve.

Preparing our future workforce

During the year, volunteers across Northern Health's campuses participated in a range of activities, including some that are helping to prepare the health and medical professionals of tomorrow.

In 2015, Northern Health volunteers received an exclusive tour and insight into how our future medical, nursing and allied health professionals train in the Northern Centre for Health Education and Research's simulation labs.

The Centre's state-of-the-art facilities use realistic hi-tech mannequins to mimic real-life situations. Volunteers will be assisting in the training and development by taking part in the Simulation Patient Program, which will help enhance communication skills between medical staff and patients.

Outstanding Health Care Awards

The Outstanding Health Care Awards acknowledge Northern Health staff, students and volunteers throughout the organisation who live our values every day, and model the high standard of care our community deserves.

This year, our volunteer guides at The Northern Hospital were the very worthy winners of the Dedicated – We are focused category.

Our volunteer guides are passionate about supporting Northern Health, greeting everyone with a friendly smile and a helping hand. By generously giving their time to help others and ensure each Northern Health visitor has a positive experience, our volunteers are making a positive difference in our community.

Gourmet delights: Trudi Hay's high tea fundraiser for oncology services

In December 2014, Northern Health supporter and local Greenvale resident, Trudi Hay, hosted an elegant high tea to raise funds for oncology services.

Set on a picturesque and tranquil property amongst beautiful 400-year old river gum trees, more than 50 guests were treated to a gourmet spread for the entire afternoon, live entertainment, a fashion parade and an array of silent auction items donated by members of the local community.

The sold out event raised in excess of \$6,000 which will be used to purchase a new treatment chair for the Day Oncology Unit.

Trudi was motivated to do something practical when her close friend was diagnosed with breast cancer and her unique fundraising events have been an enormous help for Northern Health's oncology services. Trudi's past events have funded two portable chemotherapy units and assisted with the purchase of a portable 3D ultrasound imaging unit.

Fundraising events such as Trudi's High Tea help Northern Health continue to provide a high quality of care and service to our patients at all stages of their lives and illnesses. Trudi is a wonderful and inspiring example of how our supporters can make a real difference to the lives of our patients as they go through their treatment journey.

Providing support and relief: Padre Pio Dinner Dance

In May, Northern Health was very fortunate to receive a generous donation of \$15,000 from local fundraising group The San Padre Pio Committee.

San Padre Pio Committee President, Diodoro Ferraro, said the group made the donation to Northern Health because it wanted to "give back to the community."

The donation has helped purchase six Princess Chairs to benefit patients at The Northern Hospital.

The therapeutic chairs provide support and relief for patients with limited physical mobility, as well as helping to minimise pressure sores and reduce the risk of falling.

Hundreds of patients at The Northern Hospital each year will benefit from The San Padre Pio Committee's generous gift.



PART 3

Signature events

Supporting innovative health care outcomes: Northern Health Research Dinner

In June 2015, the third annual Northern Health Research Dinner was held to raise funds to pioneer simulation research at Northern Health.

Supported by our academic partners, the University of Melbourne, La Trobe University, RMIT University and Deakin University, the evening was a great opportunity for medical professionals to support Northern Health as we work to translate research into practice, enhance patient safety and create more positive outcomes for our northern community.

The black tie event was held in the opulent grandeur of the Melbourne Town Hall and brought together a range of notable guests including the Northern Health Board, executive and staff.

Six-time ARIA Award winner, Wendy Matthews, entertained guests and American bestselling author Dan Heath gave a compelling keynote address about how to effect transformative change.

Northern Health Executive Director of Research, Peter Brooks, spoke to guests about how the event highlighted the importance of Northern Health being at the forefront of developing new models of care to meet the complex and challenging health care needs of our growing community.

He noted that changes within the fields of health care and medical education present many challenges in providing effective education and training for health care professionals and that funds raised from the Research Dinner will help Northern Health explore new ways of providing treatment and care, as well as developing innovative health care outcomes.

Dining out for a good cause: Northern Health Annual Dinner

Close to 500 guests attended the 2014 Northern Health Annual Dinner in August, raising an extraordinary \$150,000 to support Northern Health's women's and children's services.

Held at Casa D'Abruzzo in Epping, guests dined on sumptuous Italian food and enjoyed an evening of entertainment featuring a live performance by Shannon Noll and his band.

The event was compered by MC Mike Brady who also indulged the crowd with some of his favourite songs including footy anthems 'One day in September' and 'Up there Cazaly'.

The success of the Annual Dinner is due in no small part to the support of our valued partners, which include local businesses, local government, community leaders, Northern Health board members and staff.

In the swing of things: Corporate Golf Day

The Northern Health Foundation's annual Senior Pro Am Corporate Golf Day held in March was another resounding success, raising \$37,500.

Eighty registered participants teed off at the picturesque Growling Frog Golf Course in Yan Yean, including professional golfers Peter Fowler, Rodger Davis, Michael Harwood, Terry Price, Tim Elliott, Michael Clayton, David Merriman and David Good as well as Northern Health board members, executives and northern community members.

Each playing group teamed up with a professional golfer from the Professional Seniors Circuit to tackle the 18-hole, par 72 course.

Players competed in a Stableford Competition for individual players, as well as a team event incorporating the senior professional's score.

Funds raised from this year's Golf Day will support the development of a Sensory Simulation Room at Bundoora Extended Care Centre. The room will provide an environment in which our older residents with dementia can experience appropriate stimulation and care that meets the challenging and complex needs of their condition. Beyond the physical setting, the room will also include social and cultural elements to help our patients remain engaged in everyday life in a meaningful way.

The Golf Day has become a much loved fixture on the Northern Health Foundation's fundraising calendar, with past events raising over \$150,000 to support the development of the Northern Centre for Health, Education and Research.

Active spirit: Northern Health Community Fun Run

In May, more than 1200 people and 1000 registered participants turned out for a day of active family fun at the Northern Health Community Fun Run, helping to raise \$20,000 to support Northern Health's paediatric services along the way.

The event aims to promote a healthy lifestyle to the northern community and participants of all ages and backgrounds, including members of our local Indigenous community, joined in the fun.

The event began with a Welcome to Country from Auntie Di followed by a warm up from the Indigenous Hip Hop Project, to get the crowd buzzing.

For the first time, the Fun Run started and finished at The Northern Hospital in Epping, with participants choosing to either walk or run a 5km course or run a designated 10 km course.

After the run, participants enjoyed a range of family-friendly activities including face painting, a jumping castle, petting zoo and performances from Kikkii the Klown and students from the Magic School.

Demand for Northern Health's paediatric services continues to grow rapidly as more and more families move into the region.

With the support of our Fun Run major partners, the City of Whittlesea, Victorian Aboriginal Health Service, Ronald McDonald House, Athlete's Foot and the YMCA Whittlesea, fundraising events such as the Community Fun Run play a vital role in helping us continue to provide high quality health care to our community.

PART 4

Donor spotlight

The Batten Society

The Batten Society was established to recognise generous individuals who choose to support the Northern Health Foundation through leaving a legacy in their will.

People who recognise Northern Health in this important way understand how their contribution will help save lives and improve services we provide to the northern community now and in the future.

The Northern Health Foundation recognises this special group who have chosen to leave a bequest to the Foundation, through their membership to the Batten Society.

The story of the Batten Family is a wonderful example of the difference each of us can make and is reassurance of the benefits a gift can bring to the northern community well beyond an individual's lifetime.

Les and Muriel Batten lived on High Street, Epping for more than 50 years and grazed their cattle on The Northern Hospital site. As part of their Estate, they decided to set up the Muriel and Les Batten Foundation, with the aim of helping and supporting young children in the community.

The Muriel and Les Batten Foundation is one of Northern Health's longest and most committed supporters. The Foundation has funded a number of projects over the years including the purchase of five Infant Isolette 8000 Incubators for the Special Care Nursery.

Most recently the Muriel and Les Batten Foundation contributed \$142,000 for the purchase of a Trace Vue Machine to monitor complex birth situations.

The dedicated support of the Muriel and Les Batten Foundation and members of the Batten Society plays a fundamental role in ensuring the vibrant health of the northern community for generations to come.



Robertson family

Business owner, Alex Robertson, has been supporting Northern Health since The Northern Hospital opened in 1998.

Alex spent his early years growing up in Harvest Home Lane, Epping—not far from The Northern Hospital.

Though he now lives in Melbourne's CBD and runs a busy real estate firm in the city, Alex never forgot his roots and has always been actively involved in community activities.

Passionate about giving back to help others, Alex's association with Northern Health began when he was approached to sponsor the first Annual Dinner and his support of the event has endured for 17 years!

Alex was instrumental in the formation of the Corporate Fundraising Committee, and held the role of Chair for more than ten years.

During that time, the Corporate Fundraising Committee conducted four house and land projects, initiated the Annual Fun Run, established a venue donation tin scheme and initiated many other successful ongoing fundraising projects.

Using his wide network of business connections and enthusiasm for Northern Health, Alex encouraged many local businesses to sponsor Northern Health events, and much of that support continues today.

Through the Epping Plaza Hotel and Lower Plenty Hotel, Alex has sponsored not only the Annual Dinner, but the Annual Fun Run, Golf Days a Race Day, as well as encouraging the venues to conduct their own fundraising activities.

Given his extraordinary fundraising achievements and long-standing commitment to Northern Health, Alex was appointed an inaugural member of the Northern Health Foundation Board.

Alex continues to lead by example and the spirit of

philanthropy within the Robertson family has expanded to include Alex's son, Mark, who in 2014 pledged to fund a three-year scholarship for a Northern Health medical student. Mark's contribution has enabled valuable investigation into issues relating to aging.

Thanks to Mark and his wife Anne, Northern Health is also fortunate to have the magnificent tapestry which is displayed in the foyer of The Northern Hospital. The tapestry, designed and commissioned through the Australian Tapestry Workshop, depicts the history of the local region.

Now 88, Alex shows no signs of slowing down. He remains an important contributor to Northern Health and continues his philanthropic involvement.

A philanthropic leader in the northern community, Alex says his philosophy is simple: "If there is any way that you can give back, seize the opportunity—there is great joy in knowing you have helped someone else, even in a small way."

PART 5

DONOR LIST

Patrons

Paul Wheelton
Josie Minniti Fun Group for
Cancer Services
Medtronic International
Abbott Vascular
Ronald McDonald House
Australian Hotels
Association
Baker Foundaton
Muriel & Les Batten
Foundation
Collier Charitable Fund
Places Victoria

Visionary Partners

Northern Health
Fundraising Group - Epping
Tyco Healthcare
Turi Trust
City of Whittlesea
The Good Guys
Thomastown
The Myer Foundation
Degani
Busy Fingers Group
BECC Preston Auxiliary
Bev Carman
Mark Robertson, OAM

Governors

Covidien Pty Ltd
Kodak
BANK VIC
Drums Hotel
Epping Plaza Hotel
Melbourne Legal Chambers
Automotive Lease Packaging Pty Ltd
Pioneer Concerete
Freemasons Public Charitable
Foundation Ltd
Australian Leisure & Hospitality Group
Pacific Shopping Centres
Anthony Ciccone
Roxburgh Park Hotel
John Molnar
Darley Australia P/L
Olympic Hotel
John Holland Group
Clifford Hallam Healthcare
Ian Rollo Currie Foundation
Spotless Group
Trudi Hay
Lord Mayors Charitable Fund
The Jack Brockhoff Foundation
Craigieburn Sporting Club

Partners

Encompass Church
Pantalica Cheese Company
Casa D'Abruzzo Club
McMullin Properties Pty Ltd
Lalor Bowling Club
San Padre Pio Association
Bertocchi Smallgoods
Welcome Stranger Hotel
United Refrigeration
Cockram Construction
Irene Kotronis
Smith & Nephew Pty Ltd
Epping RSL
Peter Germaine
Vascular Ultrasound Specialists
Pacific Group Of Companies
Greensborough RSL
Lower Plenty Hotel
St Monica'S College
Schneider Electrical
The Furniture Trader
Fuji Xerox Pty Ltd
Walter & Eliza Holdings Pty Ltd
Rotary Club of Bundoora
Whittlesea Bowls
Medibank
Hotel & Leisure Management
Healthcare Imaging Services
TFS Surgical
Epping Hotel

Winslow Constructors
CMW Design & Construct (Vic) Pty
Ltd
MAB Corporation
Trevor Main & Associates
Johnstaff
Parklea Pty Ltd
Toyota Motor Corporation
Mc Donalds Australia Ltd
Blue Star Global Logistics
G&C Mutual Bank
Excelsior Hotel
The Marian & E. H. Flack Trust
Rotary Club Of Rosanna
Alan P Burned Blaak & Associates
P.L
Isobel Hill Brown Charitable Trust
Recall
Ian Dunn
Bundoora Hotel
Commonwealth Bank
Greensborough Hotel
Hacer Group
Calloway Golf
Facey Industries
MPG Funds Management
Parker health
Track Consulting
Village Roadshow Limited
The Dall Family
Roxburgh Park Hotel
healthscope Pathology

